



**Building Sustainable Generational Economies
The 14th Global Meeting of the NTA Network**

**University of Paris Dauphine-PSL
February 14-17, 2023
Place du Maréchal de Lattre de Tassigny
75016 PARIS- FRANCE**



ntaccounts.org/s/Global14



Table of Contents

PROGRAM.....	3
POLICY SESSIONS AND KEYNOTE SPEAKERS	13
UNIVERSITY PARIS DAUPHINE – VENUE AND ACCOMMODATION	16
MEDICAL AND OTHER INFORMATIONS	22
SOME EXHIBITIONS IN PARIS DURING THE MEETING.....	24

PROGRAM

Tuesday, 14-Feb-23, Plenary sessions

8:30-9:00 *Registration (in front of Raymond Aron - 2nd Floor)*

9:00-9:30 **Inaugural session** with El Mouhoub Mouhoud, President, Université Paris Dauphine-PSL, additional remarks from Philippe de Vreyer, Gretchen Donehower, Andrew Mason, and Ronald Lee

9:30-10:00 **Keynote address:** François Bayrou, High Commissioner for Planning, France; Former Minister of National Education and Minister of Justice, France - introduced by Najat El Mekkaoui (Raymond Aron - 2nd Floor)

10:00-10:50 **Demographic changes and public policies (Raymond Aron - 2nd Floor)**

- Chair: Najat El Mekkaoui
- Elsa Fornero, Former Minister of Labour, Social Policies and Gender Equality, Italy
- Monika Queisser, Head of Social Policy Division (OECD)
- Abdesselam Abouddrar, Former Moroccan Ambassador to the UK and Deputy CEO at CDG- Morocco

10:50-11:10 *Break*

11:10-12:00 **Consequences of population ageing for social protection (Raymond Aron - 2nd Floor)**

- Chair: Jacques Pelletan
- Aline Désesquelles, Director for Research at INED (National Institute for Demographic Studies), France
- Pierre-Louis Bras, President of COR (Pensions Advisory Council), France
- Jean-Hervé Lorenzi, Director of Chair TDTE (Demographic Transitions, Economic Transitions), France

12:00-13:00 **Keynote lecture:** François-Charles Wolff, Professor of Economics at the Institut d'Administration des Entreprises, University of Nantes, France - introduced by Hippolyte d'Albis (Raymond Aron - 2nd Floor)

13:00-14:30 Lunch at Espace Foyer (2nd floor)

14:30-15:00 Keynote address: Keynote address: Ahmed Inaz, Chairperson of the Pension Office Board for the Maldives and Former Minister of Finance, Maldives - introduced by Gretchen Donehower. (Raymond Aron - 2nd Floor)

15:00-15:50 NTA and demographic change in aging populations – economic impacts and sustainability (Raymond Aron - 2nd Floor)

- Chair: Gretchen Donehower
- Hippolyte d'Albis , Professor of Economics, Paris School of Economics, France
- Concepción Patxot , Professor of Economics, Universitat de Barcelona, Spain
- Alexia Fürnkranz-Prskawetz, Professor of Mathematical Economics, TU Wien, Austria

15:50-16:20 Break

16:20-17:10 NTA and demographic change in Africa: The dividend and beyond (Raymond Aron - 2nd Floor)

- Chair: Andrew Mason
- Lanre Olaniyan, Professor of Economics, University of Ibadan, Nigeria
- Latif Dramani, Director, Center for Research in the Generational Economy (CREG), Senegal
- Mystery guest: An AI Chatbot

17:10-18:00 Panel on NTA and public policy (Raymond Aron - 2nd Floor)

- Chair: Ronald Lee
- Jorge Bravo, Chief, Population Policies and Development Branch of the Population Division, UN Department of Economic and Social Affairs (DESA)
- Simone Cecchini, Chief of the Latin American and Caribbean Demographic Centre (CELADE)-Population Division of ECLAC
- Robert Gal, Senior Researcher, Hungarian Demographic Research Institute
- Wassana Im-Em, Technical Specialist on Population and Development, UNFPA Asia-Pacific Regional Office, Thailand

Wednesday, 15-Feb-23, Research and Training Session

9:00-10:45 Counting Women's Work and Gender Issues, Chair: Chłoń-Domińczak, Agnieszka, Section A (Room A709- 7th Floor)

- Elisenda Rentería, Joan García Román, and Guadalupe Souto, Non-monetary interhousehold transfers: Is time use data adequate?

- Tanja Istenič, Guadalupe Souto, Gemma Abío, Elisenda Rentería, Ció Patxot: The gender gap in paid and unpaid work along the life cycle: The role of the family
- Setsuya Fukuda and Rikiya Matsukura, The Future Demand-Supply Gap in Unpaid Work in Japan and the UK: How Population Ageing Affects Intergenerational Transfers of Unpaid Work?
- Rikiya Matsukura and Setsuya Fukuda, Shall we be released from housework?: The economic impact of automation in unpaid work

9:00-10:45 Demographic Dividend, Chair: Cassio Turra, Section B (Room A701- 7th Floor)

- Christopher Gee and Eddie Choo, Singapore's demographic dividends: past and future
- Joshua Wilde and Mahesh Karra, Savings and the Demographic Dividend
- Akanni Olayinka Lawanson, Olanrewaju Olaniyan, Noah Olasehinde, Adeteju Odufuwa, and Olabanji Awodumi, Comparative Analysis of the National and Sub-National National Transfer Account Results in Nigeria
- Ricardo Cantú Calderon, The End of the Mexican Fiscal Dividend: A Microsimulation Approach

9:00-10:45 NTA Training, Section C (Room A707- 7th Floor)

- Tanja Istenic
- Joze Sambt
- Andrew Mason
- Mun-Sim Lai

10:45-11:15 Break

11:15-13:00 Counting Women's Work and Gender Issues, Chair: Elisenda Rentería, Section A (Room A709- 7th Floor)

- Najat El Mekkaoui and Sara Loukili, Gendered differences in paid and unpaid labor, barriers to economic participation and wealth accumulation throughout the Lifecycle in Morocco
- Latif Dramani, Camille Guidime, Marthe Ndoye, Comparative Analysis of NTA results in West Africa
- Agnieszka Chłoń-Domińczak, Marta Marszałek, and Wojciech Łątkowski, Reversed revolution? Gender division of market and household work in the low-fertility environment in Poland
- Jože Sambt and Tanja Istenič, Unveiling childcare and long term care hidden behind the primary activities

11:15-13:00 Demographic Dividend, Chair: Akanni Olayinka Lawanson, Section B (Room A701- 7th Floor)

- Olanrewaju Olaniyan, Akanni Lawanson, and Noah Olasehinde, Odufuwa, Oyeteju Awodumi, Olabanji, Institutionalization of Demographic Dividend programming: Lessons from Nigeria
- Oyeteju Odufuwa, Olanrewaju Olaniyan, Akanni Lawanson, Noah Olasehinde and Awodumi, Olabanji, The Demographic dividend perception and outcome monitoring index for Nigeria: Methods and results
- Camille, Detondji, Jean-Baptiste Oga, Barthélémy Biao, and Latif Dramani, Consumption of unpaid domestic work and demographic dividend in Benin
- Soulayxay Bounthideth and Latdavanh Songvilay, How Lao PDR Will Benefit from the Demographic Dividend

11:15-13:00 NTA Training, Section C (Room A707- 7th Floor)

- Tanja Istenic
- Joze Sambt
- Andrew Mason
- Mun-Sim Lai

13:00-14:00 Lunch at ESPACE 7 (7th floor)

- **14:00-15:45 Counting Women's Work and Gender Issues**, Chair: Joze Sambt, Section A (Room A709- 7th Floor)
- Barthélémy Biao, Camille Guidime, Jean-Baptiste Oga, and Latif Dramani, Mesure et valorisation monétaire du travail domestique au Benin: Une approche par les NTTA
- Simone Wajnman and Cassio M. Turra, Challenges measuring the care economy: how to integrate different methodological approaches and offer a comprehensive perspective?
- Vladimir Kozlov, NTA and NTTA approach in the estimation of the premature mortality burden. Evidence from Post-Soviet space
- Wendy Cunningham, Sarika Gupta, Mitja Del Bono, Mahesh Karra, and Joshua Wilde, Liberian Women Count: Evidence from a Macrosimulation of the Gender Dividend

14:00-15:45 Demographic Dividend, Chair: Nazli Sahanogullari, Section B (Room A701- 7th Floor)

- Latif Dramani, Edem Akpo, Jean-Baptiste Oga, Monitoring Demographic Dividend in West Africa Countries

- Jean-Baptiste Oga Idossou, Dètonджи Camille Guidme, and Latif Dramani, Lifecycle and economic growth in Benin between 2007 and 2019
- Bakary Dosso, Latif Dramani, and Lanre Olanyan, Eugenia Amporfu, and Barthélémy Biao, African Union Roadmap on harnessing demographic dividend through investments in youths: Review of the 5 years implementation status
- Angela Baschieri, Willis Odek, Marc Derveeuw, Morné Oosthuizen, Fredrick Okwayo, Chinwe Ogbonna, Ntebohng Mahlaha, Clifford Odimegwu, and Sasha Frade, Building contextual development challenges into the national transfer accounts (NTA) approach to demographic divided estimation: A case study of the HIV epidemic in Lesotho

14:00-15:45 NTA Training, Section C (Room A707- 7th Floor)

- Tanja Istenic
- Joze Sambt
- Andrew Mason
- Mun-Sim Lai

15:45-16:15 Break

16:15-18:00 Special Topics, Chair: Gretchen Donehower, Section A (Room A709- 7th Floor)

- Hassan Eini-Zinab, Mehrnaz Soleymanlou, Seyed Reza Sobhani, The Effect of Age-structural and Nutritional Transitions on Food Consumption in Iran
- Côme Cheritel, Generational Carbon Accounts: Decomposing the carbon footprint by age to assess the impact of age and generation on carbon emissions
- Maynor Cabrera, E. Coyoy, I. Mejía-Guevara, L. Velásquez, and S. Zapil, The 2014 National Transfer Accounts for Guatemala: the role of remittances and the demographic dividend.
- Pataraporn Laowong, Thailand's Policy Perspective on the Third Demographic Dividend

16:15-18:00 Viewing the World through the NTA Lens, Chair: Robert Gal, Section B (Room A701- 7th Floor)

- Lili Vargha and Tanja Istenič, Towards a typology of intergenerational reallocation patterns: Clustering of countries based on NTA (and NTTA) age profiles
- Shiqin Choo, Singapore's Economic Support Ratio by Education
- Pamela Jiménez-Fontana, New (and old) demographic challenges: analysis of the generational economy in Costa Rica

- National Administrative Department of Statistics, Manuel Hernando Pava Guzman, Beatriz Piedad Urdinola Contreras, Ana Maria Mondragon, National Transfer Accounts of Colombia – 2017

16:15-18:00 NTA Training, Section C (Room A707- 7th Floor)

- Tanja Istenic
- Joze Sambt
- Andrew Mason
- Mun-Sim Lai

19:00 Gala Dinner

Thursday, 16-Feb-23, Research and Training Session

9:00-10:45 Aging and Public Policy, Chair: Hippolyte d'Albis, Section A (Room A709- 7th Floor)

- Laishram Ladusingh, Changing pattern of intergenerational support of elderly in India: Evidence from 2004-05 and 2011-12 NTA
- Bernhard Hammer, Michael Christl, Silvia De Poli, Public redistribution in Europe: How does it affect the income of families?
- Shen Ke, Wang Feng, and Yong Cai, When Abundance Ends: Economic Transformation, Population Aging, and Shrinking Lifecycle Surplus in China, 2000-2020
- Nazli Sahanogullari, Public Transfers for Elderly and the Effects of Pension Reforms in Turkey: An NTA Approach

9:00-10:45 Viewing the World through the NTA Lens, Chair: Pamela Jiménez-Fontana, Section B (Room A701- 7th Floor)

- Gilbert Montcho, Julien Navaux, Marcel Merette, and Yves Carrière, Comparing Public Transfers to Immigrants and Natives in Canada: A National Transfer Accounts Approach
- Robert Ivan Gal and Pieter Vanhuyse, Intergenerational Resource Transfers in the Context of Welfare States
- Štefan Domonkos, and Tomáš Domonkos, Slovak NTA from 2005 to 2020
- Adhipat Warangkanand, Institutionalization of the NTA method and generation of datasets in Thailand
- Sharifah Azizah Harron and Tengku Aizan Hamid, Demographic change and active ageing in Malaysia

9:00-10:45 National Time Transfer Accounts (NTTA) Training, Section C (Room A707- 7th Floor)

- Gretchen Donehower
- Tim Miller

10:45-11:15 Break

11:15-13:00 Aging and Public Policy, Chair: Laishram Ladusingh, Section A (Room A709- 7th Floor)

- Gilbert Montcho, Yves Carriere, Marcel Merette, Population Aging and Worklife Duration in Canada
- Andrew Mason, Sustainable Consumption in an Aging World
- Hippolyte d'Albis, Julien Navaux, and Jacques Pelletan, Financing the lifecycle deficit: mutations over the period 1979-2019 in France
- Fathimath Riyaza, Preparing for ageing by investing in human capital spending

11:15-13:00 Viewing the World through the NTA Lens, Chair: Tanja Istenič, Section B (Room A701- 7th Floor)

- Agnieszka Chłoń-Domińczak and Wojciech Łątkowski, Impact of changes in years 2004-2020 on projections of aggregated lifecycle deficit and public transfers: Evidence from National Transfer Accounts
- Wassana Im-em, Sanjay Kumar, and Shadiya Ibrahim, Utilization of NTA evidence for policy attention: Lessons learned from Asia-Pacific
- Deidra Coy, Morné Oosthuizen, Nicola Boyd, and Hugh Morris, The Economic Impact of Population Change in Jamaica
- Watcharapol Wongniyomkasat, Current work on NTA Thailand: The 2021 revision of Thailand NTA and implications for sustainable consumption by the elderly

11:15-13:00 National Time Transfer Accounts (NTTA) Training, Section C (Room A707- 7th Floor)

- Gretchen Donehower
- Tim Miller

13:00-14:00 Lunch at ESPACE 7 (7th floor)

14:00-15:45 Generational Economy Frontiers, Chair: Maliki, Section A (Room A709- 7th Floor)

- Ronald Lee, Economic Growth, Intergenerational Transfers, and Population Aging

- Ció Patxot, Martin Spielauer, Thomas Horvath, Marian Fink, Gemma Abio, Guadalupe Souto, and Tanja Istenic, The effect of educational expansion and family change on the sustainability of public and private transfers
- Miguel Sánchez-Romero and Alexia Prskawetz, Socio-economic consequences of increased longevity in contemporary populations
- Miguel Sanchez-Romero, Pieter Vanhuyse, and Robert Ivan Gal, Reconstructing historical changes in the inter-age resource reallocation system
- Herasimau Raman, Immigrants in NTA: case of Slovakia

14:00-15:45 Inequality and Distributional Issues, Chair: Najat El Mekkaoui, Section B (Room A701- 7th Floor)

- Yeganeh Forouheshfar, Najat El Mekkaoui, Nidhal Ben Cheikh, Asma Benhassen, Jacob Emont, Social security coverage and informal workers in Tunisia
- Florence Arestoff, Elodie Djemai, and Estelle Koussoubé, Children nutrition status: The effect of micro and macro fertility levels at birth
- Haodong Qi and Pieter Bevelander, Immigrants' Economic Life-Cycle and the Generational Economy in Sweden
- Maliki, Dinar Kharisma, and Fisca Aulia, Social protection transfers role to reducing poverty: an NTA approach

14:00-15:45 National Time Transfer Accounts (NTTA) Open Lab, Section C (Room A707- 7th Floor)

- Gretchen Donehower
 - Tim Miller
- (For the NTTA Open Lab session, all are welcome to bring questions, data, and discussion topics related to NTTA.)*

15:50-16:20 Break

16:15-18:00 Generational Economy Frontiers, Chair: Ció Patxot, Section A (Room A709- 7th Floor)

- Juha Honkatukia and Risto Vaittinen, Evaluating the welfare costs of the COVID-19 - pandemic in Finland with an AGE model of with Intergenerational Accounting
- Hippolyte d'Albis and Ikpidi Badji, Generational evolution of disposable income in France
- Javed Alam and Preeti Dhillon, Effects of low fertility and low mortality on India's economy: A National Transfer Accounts approach

- Charles Correa and Cassio M. Turra, National Transfer Accounts for Brazil: new results with a focus on the three levels of government
- Laouali Ibro Chaibou, Impact of intergenerational transfers on economic activity and national income

16:15-18:00 Inequality and Distributional Issues, Chair: Gretchen Donehower, Section B (Room A701- 7th Floor)

- Kyrill Shraberman and Alex Weinreb, National transfer accounts in Israel: First estimates by subpopulation
- Pradittha Likitpattanakul, Economic Change of lowest income household in Thailand
- Maliki, Regional disparity and implication to the demographic dividend
- N. R. Prabhakara, Causes of Child Labor: A Review

16:15-18:00 NTA Training, Section C (Room A707- 7th Floor) – *In French*

- Julien Navaux

Friday, 17-Feb-23, Workshops, Regional Meetings, and Other Meetings

	Workshop A (Room A709- 7 th Floor)	Workshop B (Room A701- 7 th Floor)	Workshop C (Room A707- 7 th Floor)
9:00-10:15	How to measure inequality in National Accounts: The NTA, DINA, and EGDNA Perspectives (Ron Lee, Lucas Chancel (Sciences Po), and Jorrit Zwijnenburg (OECD))	Demographic dividend (Latif Dramani and Lanre Olaniyan)	Longitudinal NTA (Bernhard Hammer)
10:15-10:45	<i>Break</i>	<i>Break</i>	<i>Break</i>
10:45-12:00	Policy in an aging world (Agnieszka Chłoń-Domińczak)	Wealth accounts (James Sefton)	NTA with endogenous profiles (Miguel Sanchez-Romero)

12:00-12:30 New Member "Flash" Sessions, chair: Ronald Lee (Room A709- 7th Floor)

- Chris Gee, Singapore
- Alex Weinreb, Israel

12:30-13:00 NTA business meeting, announcements, concluding remarks

13:00-14:00 *Lunch at ESPACE 7 (7th floor)*

14:00 *Adjournment*

14:00-18:00 Member initiated meetings

POLICY SESSIONS AND KEYNOTE SPEAKERS

Abdesselam Abouddrar is the former Moroccan Ambassador to the United Kingdom. He has been appointed Deputy Director of Caisse de Dépôt et de Gestion (CDG). In August 2008 he was appointed President of the Central Agency for the Prevention of Corruption (ICPC), then elected President of the Arab Network of Fight Against Corruption and for Integrity (ACINET) and member of the Moroccan National Commission for the Reform of the Judiciary.

Hippolyte d'Albis is a senior researcher at CNRS, currently on leave at the French Ministry of Finance for economic analysis in the Inspection Générale des Finances. He is also professor at the Paris School of Economics, co-president of the Cercle des économistes, columnist at Les Echos, director of the French team of the National Transfer Accounts network, co-director of the French Regional Database, associate editor of the Journal of Demographic Economics and the Journal of the Economics of Ageing and member of the editorial advisory board of the Public Finance Review.

François Bayrou is a Professor of classical letters. He was Minister of National Education (1993-1997) and Minister of Justice (2017). Deputy of Pyrénées-Atlantiques between 1986 and 2012, he also chaired the general council of this department from 1992 to 2001 and was elected in the European Parliament from 1999 to 2002. He has been mayor of Pau since 2014. On September 3, 2020, he was appointed High Commissioner for Planning by the President of the Republic.

Pierre-Louis Bras has held management positions in the banking and mutual insurance sectors, as well as in the public sector (director of social security, general secretary of the Ministry of Social Affairs). He participated in ministerial cabinets in charge of social protection and health issues. He is currently Inspector General of Social Affairs, President of the Pensions Advisory Council (COR) and President of the ATIH Orientation Council, associate professor at Paris Descartes and member of the health chair at Sciences-Po.

Aline Désesquelles is a demographer. Her research focuses mainly on the health and mortality of populations, particularly in the context of international comparisons, coordinating the international MultiCause network. She is responsible for the first national survey on disability in the prison environment (HID-prisons, 2001). She is Director of Research at INED, Associate researcher at Iris and a research affiliate at the Population Studies Center at the University of Pennsylvania.

Aishath Mohamed Didi is Minister of Gender, Family and Social Services from the Republic of Maldives. Prior to this appointment, Ms. Aishath Mohamed Didi served as the Ambassador (High Commissioner) appointed to India from the Maldives. Her experience includes consultancies and serving for civil and public affairs for Education and Child/Women's Rights.

She has been a member of the UN Task Force on Youth and Adolescents and of the UN Task Force on Gender. She has completed a Master of Arts from the Institute of Education, University of London.

Gretchen Donehower is the current Chair of the NTA Executive Council. She is an academic specialist with the Center for the Economics and Demography of Aging (CEDA) at the University of California at Berkeley. She has been a member of the US NTA team, maintaining the age accounts for the United States and developing new methodologies. She is the founding Principal Investigator of the Counting Women's Work project, which grew out of NTA's efforts to include gender as an analytical category.

Najat El Mekkaoui is Professor associate and Senior Research Fellow at the Economics Department, LEDa DIAL, University Paris Dauphine-PSL and holds several leadership positions in international bodies. Her research focuses on demographic changes, social protection programs, and pension funds strategies. She is a Research Fellow at the Euro-mediterranean Network of Economic Studies and the Economic Research Forum. In 2003 she founded the annual International Conference on Pension, Insurance and Savings that was co-organized with University of California at Berkeley, Harvard University, NOVA university and Oxford University.

Elsa Fornero is Professor of Economics at the University of Turin. She is also Scientific Coordinator at CeRP, Research Fellow at Netspar, and Policy Fellow at the IZA Institute for the Study of Labour. She is a member of the Scientific Council of the Observatoire de l'Épargne Européenne and of the Research Committee of the OECD International Network on Financial Education. From November 2011 to April 2013 she served as Minister of Labour, Social Policies and Equal Opportunities in Italy's government. Fornero is the author of many publications.

Ronald Lee is a demographer and economist at the University of California at Berkeley. He is the founding Director of the Center for the Economics and Demography of Aging. His current research focuses on the macroeconomic consequences of changing population age distributions and on intergenerational transfers and population aging. He is co-director of National Transfer Accounts project. He is an elected member of the US National Academy of Sciences, American Association for the Advancement of Science, American Academy of Arts and Sciences, the American Philosophical Society, and a Corresponding Fellow of the British Academy.

Jean-Hervé Lorenzi is Professor of Economics and the founder of the Cercle des Economistes, which he assumed the presidency before taking that of the Economic Meetings of Aix-en-Provence. Until 2013, he was advisor to the management board of the Compagnie Financière Edmond de Rothschild. He was then President of the Finance & Innovation competitiveness cluster. In 2021, he joined the management company ISALT as a special advisor. He is the Director of Chair TDTE (Demographic Transitions, Economic Transitions).

Andrew Mason is Professor of Economics at the University of Hawaii at Manoa and Senior Fellow at the East-West Center. He is specializing in population and economic development, saving, formal demography, the economics of aging, and intergenerational transfers. Andy did early work on the influence of demography on saving behavior at both the individual and the aggregate level. Other works have been published in formal economic demography on sex ratios and constitution of households. Andy co-directs the National Transfer Accounts project, developing much of its methodology and many applications including dynamic theory.

El Mouhoub Mouhoud is Professor of Economics (LEDa) and President of the University Paris Dauphine since 2020. His research focuses on the effects of globalization on the labor market, the competitiveness of territories, the relocation and relocation of activities, international migration and the development of countries in the Middle East-North Africa region. El Mouhoub Mouhoud was Scientific Advisor to the General Planning Commission and consultant to the OECD, the UN (UNDP, UNFPA) and the World Bank.

Monika Queisser is Senior Counsellor to the Director of Employment, Labour and Social Affairs Directorate and the Head of Social Policy Division at the OECD, where she supervises and coordinates the work on social protection, social indicators, pensions, affordable housing, family and LGBTI policies. Prior to joining the OECD, Ms. Queisser worked at the World Bank in Washington, D.C. She was a member of the pensions and insurance group in the Financial Sector Development Department.

François-Charles Wolff is a professor of Economics at the University of Nantes. He is currently Director of the Laboratory of Economics and Management of Nantes Atlantique (LEMNA) and of the doctoral school EDGE. He is also an associate researcher at the Institut National des Etudes Demographiques (INED). François-Charles Wolff is the author of many publications mainly in the field of applied microeconometrics.

UNIVERSITY PARIS DAUPHINE – VENUE AND ACCOMMODATION

University Paris Dauphine – PSL

University Paris Dauphine was established in 1968, in a context of unprecedented reform in French higher education. It has always been an experimental university, with a scientific and educational project centered on the organization and decision sciences, fostering creativity in research and learning alike. The school's distinctiveness came about by promoting multidisciplinary education, infused with the latest scientific knowledge in economics, law, computer science, math, management science, political science, and sociology. Based on small group instruction, its educational model combines academic excellence with a close proximity to the business world. With a view toward the city and societal challenges, Paris-Dauphine seeks to train engaged and responsible citizens.

Conference Venue

Université Paris Dauphine – PSL : Place du Maréchal de Lattre de Tassigny – 75016 Paris

Public transportation

Métro : Ligne 2, stop at Station « Porte Dauphine »

Suburban Train : RER C, stop at Station « Avenue Foch »

Bus : PC1, stop at Station « Porte Dauphine »

Arriving by plane

From Charles de Gaulle Airport (60mn). Price : 11,45€

RER B direction Paris : Charles de Gaulle Airport → Châtelet-les-Halles

Then, RER A direction Saint-Germain-en-Laye, Cergy, Poissy : Châtelet-les-Halles → Charles de Gaulle Etoile

Then, Subway 2 : Charles de Gaulle Etoile → Porte Dauphine

From Orly Airport (60mn). Price : 11€

Orlyval direction Antony : Orly Airport Airport → Antony

Then, RER B direction Paris : Antony → Châtelet-les-Halles

Then, RER A direction Saint-Germain-en-Laye, Cergy, Poissy : Châtelet-les-Halles → Charles de Gaulle Etoile

Then, Subway 2 : Charles de Gaulle Etoile → Porte Dauphine

Taxis Flat rate from Airports to Paris (rive droite)

From Paris Charles de Gaulle Airport : 55€

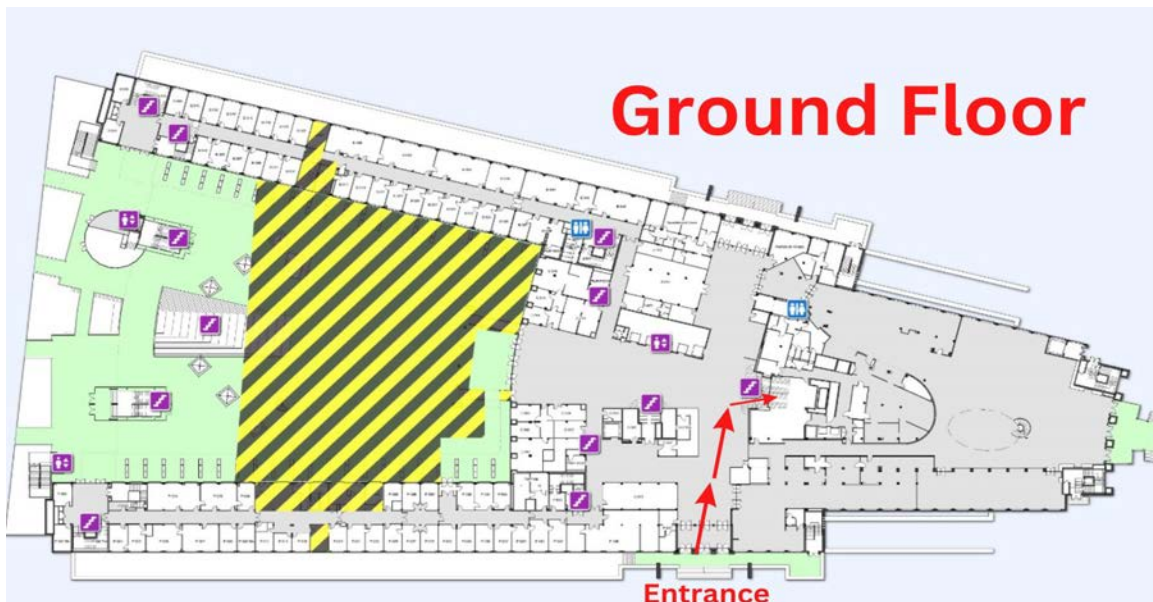
From Orly Airport : 41€

Tickets t+ : Valid for 1 journey (maximum 2h) combining bus/tram or metro/RER inside Paris.
Fare : 2,10€ per single ticket.

Access to the conference rooms

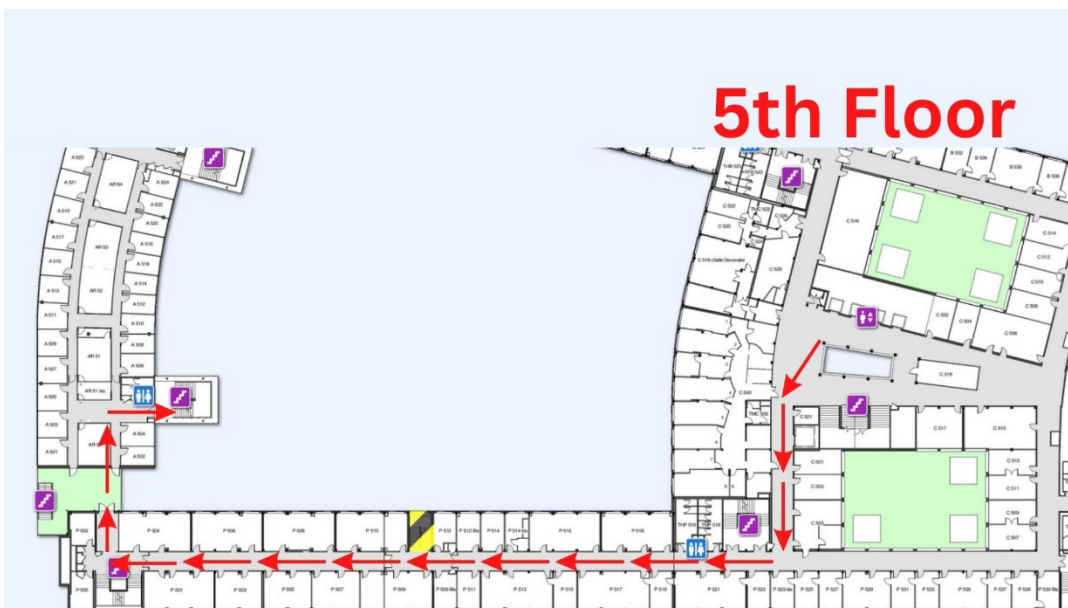
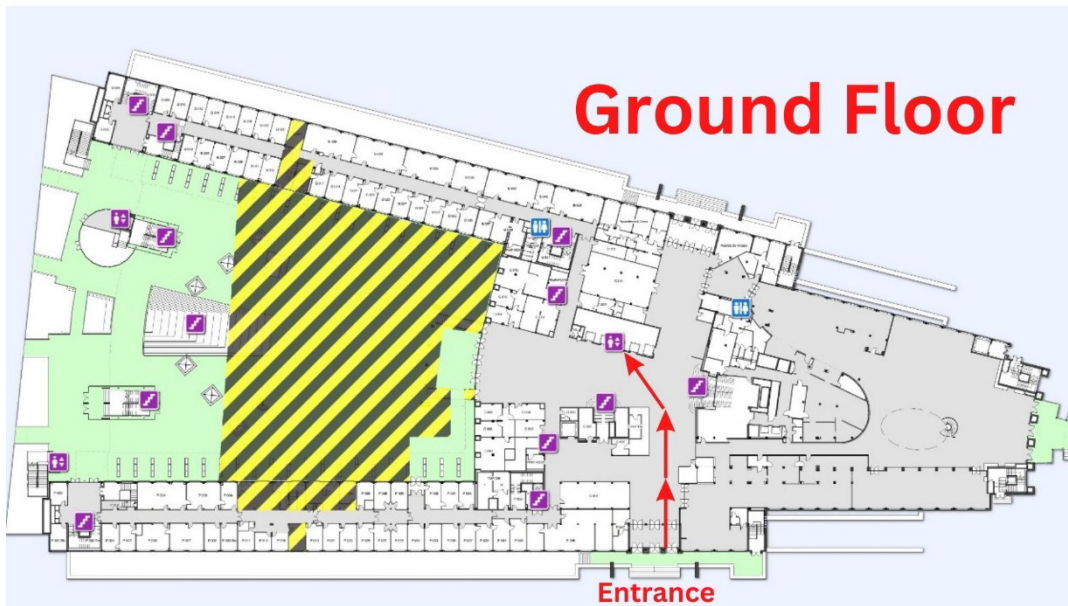
Access to Raymond Aron

- After entering the university main hall, take the elevator (for the second floor) or stairs on your right
- Once on the second floor, the Raymond Aron room is on your right from stairs or left if you take the elevator.



Access to Rooms A703, A707, A709, A711, Espace 7 (A700)

- Take the elevator up to the 5th floor
- Once on the 5th floor, walk along the P wing
- Once you have reached the outside stairs, go up to the 7th floor
- Rooms A703, A709, A711 and A700 are on your left
Do not hesitate to follow the signs





WIFI Activation

- Select “Dauphine-Guest”
- Choose: Either “Receive your identifiers on this portal” or “Receive your identifiers by email” then follow the registration procedure
- Once the identifiers have been given, click on “Back”, then “Connect”

Additional information about rooms

A meeting room (A703) is provided for holding meetings of UN members and of the NTA management committee.

Paris Dauphine University is not able to dedicate a cloakroom for the conference and cannot be held responsible in the event of theft or loss. Please take care of your personal belongings.

Hotel Suggestions near Paris-Dauphine University

***** : Price range between 130€ and 170€**

Hôtel Eiffel Kennedy (~ 150€)***

12, rue de Boulainvilliers - 75016 Paris

Phone : +33 1 45.24.45.75

Site : <https://www.eiffelkennedy.com>

RER C : Boulainvilliers

Hôtel Gaston (~ 140€)***

51, boulevard Pereire - 75017 Paris

Phone : + 33 1 44.01.04.90

Site : <https://www.hotel-gaston.com>

RER C : Pereire Levallois

Hôtel des Batignolles (~ 130€)***

26-28 rue des Batignolles - 75017 Paris

Phone : + 33 1 43.87.70.40

Site : <https://www.batignolles.com>

Metro : Ligne 2 : Rome

Magda Champs Elysées (~ 170€)***

7, rue Troyon - 75017 Paris

Phone : + 33 1 47.64.10.19

Site : <https://www.arcotel-magdachampselysees.com>

Metro : Ligne 2 : Charles de Gaulle Etoile

Acacias Etoile (~150€)***

11, rue des Acacias, 75017 Paris

Phone : +33 1 43.80.60.22

Site : <https://www.arcotel-acaciasetoile.com>

Metro : Ligne 2 : Charles de Gaulle Etoile

Hôtel Paris Neuilly (~ 170€)****

1, Avenue de Madrid – 92200 Neuilly sur Seine

Phone : +33 1 47.47.14.67

Site : <https://www.hotel-paris-neuilly.com>

Metro : Ligne 1 : Pont de Neuilly

Hôtel Doisy Etoile (~ 180€)****

55, Avenue des Ternes - 75017 Paris

Phone : +33 1 45.74.21.86

Site : <https://www.doisy-etoile.com>

Metro : Ligne 2 : Ternes

Hôtel Résidence Foch (~ 200€)****

10 rue Marbeau,75116 Paris

Phone : +33 1 45.00.46.50

Web : <https://www.foch-paris-hotel.com>

Métro : Ligne 2 : Porte Dauphine

Résidence Impériale – Toujours & Spa (~ 180€)****

155 Avenue de Malakoff, 75016 PARIS

Phone : +33 1 45.00.23.45

Web : <http://www.hoteltoujours.paris>

RER C : Porte Maillot

Hôtel Pergolèse (~190€)****

3, rue Pergolèse - 75116 Paris

Phone : +33 1 53.64.04.04

Web-site: <https://www.pergolese.com>

RER C : Porte Maillot

Hôtel Victor Hugo Paris Kléber (~ 210€)****

19, rue Copernic, 75116 Paris

Phone : +33 1 45.53.76.01

E-mail: paris@victorhugohotel.com

Metro : Ligne 2 : Victor Hugo

Apartments

Citadines Trocadéro Paris (~250€)***

29 bis, rue Saint-Didier ,75116 Paris, France

Phone : + 33 1 56.90.70.00

Web : <https://www.citadines-trocadero-hotel-paris.at-hotels.com>

Metro : Ligne 2 : Victor Hugo

MEDICAL AND OTHER INFORMATIONS

Covid Information

Prevention

Wearing a mask is no longer compulsory in establishments open to the public, nor in transport. However, wearing a mask is still recommended by public authorities. The “sanitary pass”/proof of vaccination is no longer in effect as of August 1, 2022.

Isolation

For people who test positive for Covid and have a complete and up-to-date vaccination schedule and for children under 12 years of age : isolation is for 7 (full) days from the date of onset of symptoms or date of collection of the positive test. However, after 5 days, the person can leave isolation if she performs an antigen or RT-PCR test and it is negative and if she has had no clinical signs of SARS-CoV-2 infection for 48 hours. For people who test positive for Covid but have an incomplete vaccination schedule and for unvaccinated people the above are respectively 10 and 7 days.

Tests

The PCR test looks for the presence of the RNA of the virus, the analysis is carried out by a biologist in a medical biology laboratory. The result is obtained in a few hours. Cost in Paris: around 40€.

Antigenic tests looks for antigens present on the surface of the virus and give a result in a few minutes, allowing early diagnosis of patients from the acute phase. The analysis is carried out by a healthcare professional. Cost in Paris : around 20€.

Self-antigenic tests cost around 5€. The organization committee will have a limited number of auto-tests at the meeting. Please contact us if you require a test.

Medical services

The University infirmary is opened and available to attendees without appointment, from 8:30 to 19:30. It is located in the ground Floor, B Wing, room B039.

Emergency calls : SAMU (15) and Fire Brigade (18)

Doctors

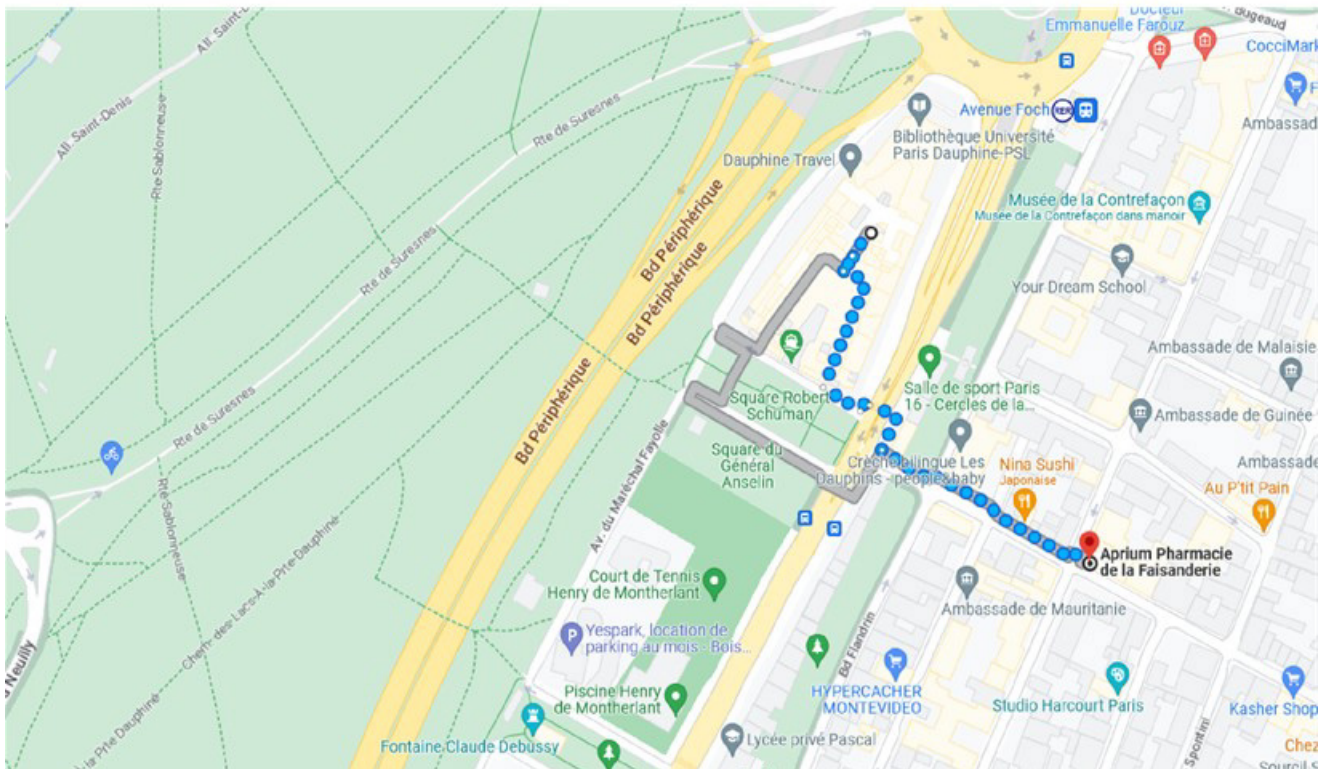
Several doctors, at walking distance from University, are available without appointment

Dr Takun
8 Avenue Vion-Whitcomb, 75016 Paris
Phone : 09.85.02.28.55

Dr Cattan
2, rue Robert Le Coin, 75016 Paris
Phone : 01.73.17.31.73

Pharmacy

The closest pharmacy is at walking distance from the University
Aprium – Pharmacie de la Faisanderie
63, rue de la Faisanderie – 75016 Paris



Dress code

There is no specific requirement for the gala dinner.
By the law of October 11, 2010, it is not permitted in public space to wear an outfit that conceals the face.

SOME EXHIBITIONS IN PARIS DURING THE MEETING

Alberto Giacometti / Salvador Dalí : Jardins de rêves

Giacometti and Dalí, members of the surrealist group, frequented the same circles in the early 1930s. The exchange between them was lively, intellectual, creative, and their works entered into a fruitful dialogue. This exhibition highlights their friendship as well as their common taste for exploring dream spaces. Jardins de rêves thus explores the deep links that exist between the dreamlike canvases of Dalí and the enigmatic sculptures of Giacometti, inhabited by the same research around sexuality, landscape and dream.

Institut Giacometti, Paris 14e : fondation-giacometti.fr/fr/institut

Ca' d'Oro, Chefs-d'œuvre de la Renaissance à Venise

The Ca' d'Oro museum and palace in Venice is delivering a set of exceptional loans during the restoration work. The exhibition will be an opportunity to explore the art and history of the Serenissima through the works of the Ca' d'Oro, with particular emphasis on the Renaissance period. A selection of more than 70 works by the greatest artists active in Venice and its surroundings during the Renaissance are to be discovered: medals by Pisanello and Gentile Bellini, paintings by Tintoretto and Titian, marbles by Tullio Lombardo, bronzes by Bartolomeo Bellano, the Antico, Vittore Camelio or Andrea Riccio.

Hôtel de la Marine, Paris 8e : www.hotel-de-la-marine.paris

Monet - Mitchell

This exhibition stages a visual, artistic, poetic and sensitive “dialogue” between the works of two artists: Claude Monet (1840-1926), with the Water Lilies, and Joan Mitchell (1925-1992). Both left their mark on their time and on generations of painters. Facing the same landscape, that of the banks of the Seine, Monet and Mitchell develop a pictorial approach that they define in analogous terms; referring to “sensation” for Monet and “feelings” for Mitchell.

Fondation Louis Vuitton, Paris 16e : www.fondationlouisvuitton.fr

Kimono

Emblematic clothing and characteristic of the identity of Japan, the kimono is today an essential piece of fashion. Appeared more than 1000 years ago, the kimono, literally meaning “what is worn”, embodies in the eyes of the Japanese the national culture and sensibility. Linked to the identity of Japan, this garment is now resolutely modern and a source of inspiration for the greatest fashion designers. The museum proposes to retrace the history of the kimono from every angle, to highlight its aesthetics and its influence on Western fashion.

Musée du Quai Branly – Jacques Chirac, Paris 7e : www.quaibrantly.fr

L'Encre en mouvement

From the end of the Empire to the Revolution of 1949, 20th century China experienced profound changes: painting was in phase with these changes. Defined for centuries by the use of ink, it will reinvent itself through contact with oil painting and photography, but also thanks to the rediscovery of its own past. Chinese painting of the 20th century is thus at the heart of this exhibition route, which presents more than 70 works by 36 Chinese artists.

Musée Cernuschi, Paris 8e : www.cernuschi.paris.fr

Chagall, Paris – New York

The entire work of Marc Chagall (1887-1985) is given pride of place. A prolific painter, Paris was his city of choice, notably thanks to the avant-gardes of the 1910s which fueled his experimental research. If the city of New York first embodies a place of exile in the 1940s, it will also be the sign of a new impetus to the artist's creativity. After the war, several exhibitions and major artistic commissions would still forge links between Paris and New York and remind Chagall in the United States, until the 1970s. During this immersive exhibition, all the themes that make up Marc Chagall's imagination will parade on the walls of the Atelier des Lumières.

La Halle – Atelier des Lumières, Paris 11e : www.atelier-lumieres.com



ntaccounts.org/s/Global14